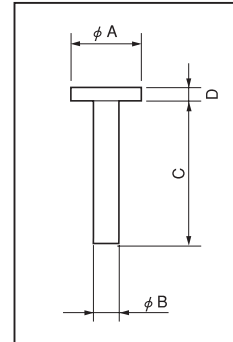


Terminal for hybrid IC

CK series (1000pcs/pack)

- Please use this for a leg of hybrid IC, etc.
- Material CK-02 to CK-04 series: Phosphor bronze
Other: Brass
- Finish: Gold plating over nickel base
- Rated current
 - CK-1 series: 3A CK-02 series: 1A
 - CK-2 series: 4A CK-03 series: 2A
 - CK-3 series: 7A CK-04 series: 2A



Part No.	A	B	C	D	Printed board fitting hole diameter
CK-02-3	0.4	0.2	3	0.1	φ 0.3
CK-02-5	0.4	0.2	5	0.1	φ 0.3
CK-03-3	0.6	0.3	3	0.15	φ 0.4
CK-03-5	0.6	0.3	5	0.15	φ 0.4
CK-03-8	0.6	0.3	8	0.15	φ 0.4
CK-03-10	0.6	0.3	10	0.15	φ 0.4
CK-04-3	0.8	0.4	3	0.2	φ 0.5
CK-04-5	0.8	0.4	5	0.2	φ 0.5
CK-04-8	0.8	0.4	8	0.2	φ 0.5
CK-04-10	0.8	0.4	10	0.2	φ 0.5
CK-1-1	0.8	0.5	5	0.3	φ 0.6
CK-1-2	0.8	0.5	10	0.3	φ 0.6
CK-1-3	0.8	0.5	15	0.3	φ 0.6
CK-1-4	0.8	0.5	8	0.3	φ 0.6
CK-2-1	1.0	0.7	5	0.3	φ 0.8
CK-2-2	1.0	0.7	8	0.3	φ 0.8
CK-2-3	1.0	0.7	10	0.3	φ 0.8
CK-2-4	1.0	0.7	15	0.3	φ 0.8
CK-3-1	1.5	1.0	5	0.3	φ 1.1
CK-3-2	1.5	1.0	8	0.3	φ 1.1
CK-3-3	1.5	1.0	10	0.3	φ 1.1
CK-3-4	1.5	1.0	15	0.3	φ 1.1
CK-3-5	1.5	1.0	20	0.3	φ 1.1
CK-3-6	1.5	1.0	25	0.3	φ 1.1
CK-3-7	1.5	1.0	30	0.3	φ 1.1
CK-3-8	1.5	1.0	35	0.3	φ 1.1
CK-3-9	1.5	1.0	40	0.3	φ 1.1