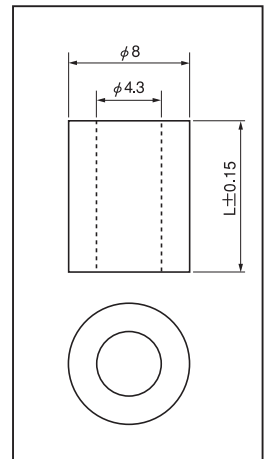
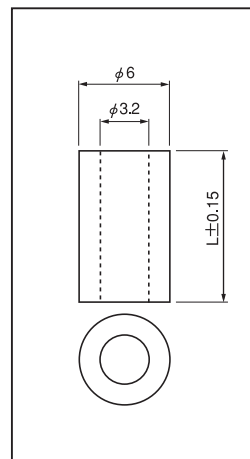
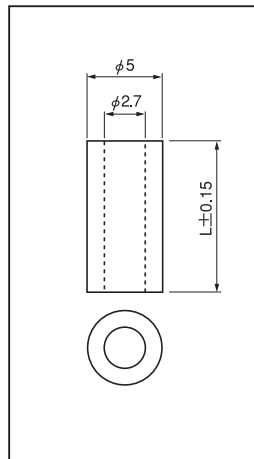
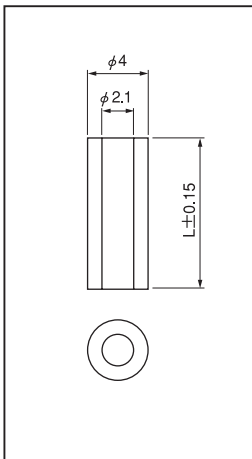
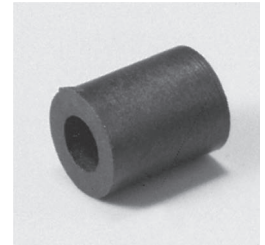
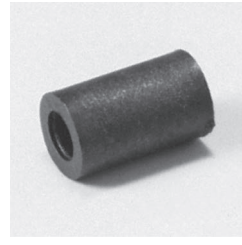


Resin type

Spacer of hollow shape for printed board

EB, 4EB, 2.6EB, 2EB series (100pcs/pack)

- This is used for fitting a printed board to a chassis, and other adaptive cases.
- Material: PBT (UL94V-0)
- Color: BLACK
- Operating temperature range: - 40 to + 125 °C



■ For M2 screw

Part No.	L
2EB-1	1
2EB-2	2
2EB-3	3
2EB-4	4
2EB-5	5
2EB-6	6
2EB-7	7
2EB-8	8
2EB-9	9
2EB-10	10
2EB-11	11
2EB-12	12
2EB-13	13
2EB-14	14
2EB-15	15
2EB-16	16
2EB-17	17
2EB-18	18
2EB-19	19
2EB-20	20
2EB-25	25
2EB-30	30
2EB-35	35
2EB-40	40
2EB-45	45
2EB-50	50

■ For M2.6 screw

Part No.	L
2.6EB-1	1
2.6EB-2	2
2.6EB-3	3
2.6EB-4	4
2.6EB-5	5
2.6EB-6	6
2.6EB-7	7
2.6EB-8	8
2.6EB-9	9
2.6EB-10	10
2.6EB-11	11
2.6EB-12	12
2.6EB-13	13
2.6EB-14	14
2.6EB-15	15
2.6EB-16	16
2.6EB-17	17
2.6EB-18	18
2.6EB-19	19
2.6EB-20	20
2.6EB-25	25
2.6EB-30	30
2.6EB-35	35
2.6EB-40	40
2.6EB-45	45
2.6EB-50	50

■ For M3 screw

Part No.	L
EB-1	1
EB-2	2
EB-3	3
EB-4	4
EB-5	5
EB-6	6
EB-7	7
EB-8	8
EB-9	9
EB-10	10
EB-11	11
EB-12	12
EB-13	13
EB-14	14
EB-15	15
EB-16	16
EB-17	17
EB-18	18
EB-19	19
EB-20	20
EB-25	25
EB-30	30
EB-35	35
EB-40	40
EB-45	45
EB-50	50

■ For M4 screw

Part No.	L
4EB-1	1
4EB-2	2
4EB-3	3
4EB-4	4
4EB-5	5
4EB-6	6
4EB-7	7
4EB-8	8
4EB-9	9
4EB-10	10
4EB-11	11
4EB-12	12
4EB-13	13
4EB-14	14
4EB-15	15
4EB-16	16
4EB-17	17
4EB-18	18
4EB-19	19
4EB-20	20
4EB-25	25
4EB-30	30
4EB-35	35
4EB-40	40
4EB-45	45
4EB-50	50