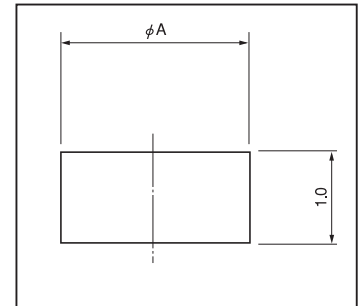


Contact point for surface mounting

NB series

- This is used as a contact point and support of a surface mounting board.
- Material NB-1-1.5 to NB-1-3.0 : Brass, NB-1-3.5 to NB-1-6.0: Copper
- Finish:
 - NB-1-□ -G:Gold plating over nickel base
 - NB-1-□ -S:Tin plating over nickel base



■ Part No.

- Bulk item (1000pcs/pack)

Part No.	A	Plating
NB-1-1.5-G	1.5	Gold
NB-1-1.5-S	1.5	Tin
NB-1-2.0-G	2.0	Gold
NB-1-2.0-S	2.0	Tin
NB-1-3.0-G	3.0	Gold
NB-1-3.0-S	3.0	Tin
NB-1-3.5-G	3.5	Gold
NB-1-3.5-S	3.5	Tin
NB-1-4.0-G	4.0	Gold
NB-1-4.0-S	4.0	Tin

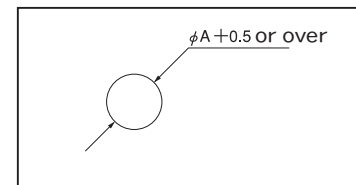
Part No.	A	Plating
NB-1-5.0-G	5.0	Gold
NB-1-5.0-S	5.0	Tin
NB-1-6.0-G	6.0	Gold
NB-1-6.0-S	6.0	Tin

- Taping product

Part No.	A	Plating	Quantity per reel
NB-1-1.5-G-T	1.5	Gold	3000 pcs
NB-1-1.5-S-T	1.5	Tin	3000 pcs
NB-1-2.0-G-T	2.0	Gold	3000 pcs
NB-1-2.0-S-T	2.0	Tin	3000 pcs
NB-1-3.0-G-T	3.0	Gold	1500 pcs
NB-1-3.0-S-T	3.0	Tin	1500 pcs
NB-1-3.5-G-T	3.5	Gold	1500 pcs
NB-1-3.5-S-T	3.5	Tin	1500 pcs
NB-1-4.0-G-T	4.0	Gold	1500 pcs
NB-1-4.0-S-T	4.0	Tin	1500 pcs

Part No.	A	Plating	Quantity per reel
NB-1-5.0-G-T	5.0	Gold	1500 pcs
NB-1-5.0-S-T	5.0	Tin	1500 pcs
NB-1-6.0-G-T	6.0	Gold	700 pcs
NB-1-6.0-S-T	6.0	Tin	700 pcs

■ Recommended land information



■ Dimension of the reel

Dimension of the reel

Dimension of the tape

Part No.	A	B	C	D	P	W	a
NB-1-1.5	1.8	3.5	9	60	4	8	180
NB-1-2.0	2.4	3.5	9	60	4	8	180
NB-1-3.0	3.5	3.5	9	60	8	8	180
NB-1-3.5	3.8	5.5	13	60	8	12	180
NB-1-4.0	4.3	5.5	13	60	8	12	180
NB-1-5.0	5.3	5.5	13	60	8	12	180
NB-1-6.0	6.3	7.5	17.5	80	12	16	180