

Socket type (ϕ 0.8 to ϕ 1.0)

Part No.: **PN-5-1** (10pcs/pack)

- This is a socket type and OP-6-1 and HJ-31 is suitable as the male pin.
- Material Pin part: Brass
Contact part: Beryllium copper
Resin part: Acetal copolymer (UL94HB)
Nut part: Brass, Nickel plating
- Finish Pin part: Gold plating over nickel base
Contact part: Gold plating over nickel base
- Resin color: BLACK, RED, YELLOW, GREEN, BLUE, WHITE
- Adaptive male pin diameter: ϕ 0.8 to ϕ 1.0
- Insertion / removal forces: 150g or over
- Rated current: 5A
- Insulation resistance: 500M Ω or over
- Withstand voltage: 1000V AC, DC per minute
- Operating temperature range: - 40 to + 85°C
- Thickness of panel that can be fit: 1.0mm to 3.0mm
- Panel fitting hole diameter: ϕ 4.2

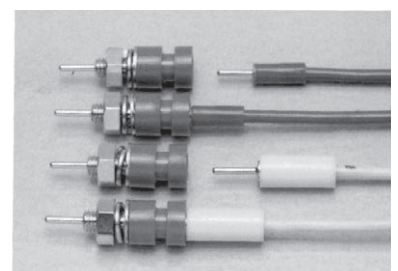
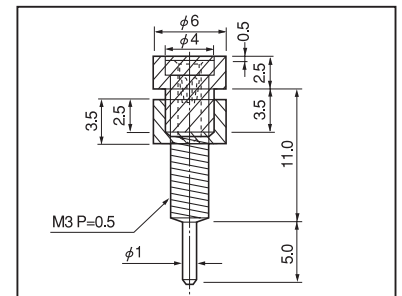
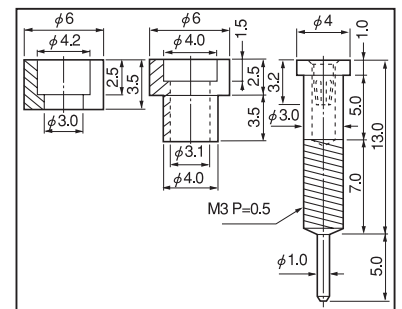
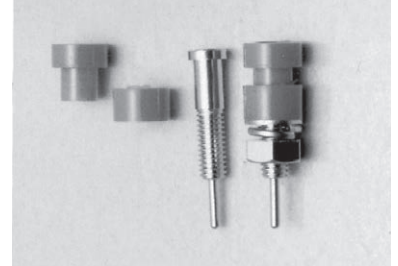
■ **How to order**

PN-5-1 RED

↑ Please specify the resin color.
(BLACK, RED, YELLOW, GREEN, BLUE, WHITE)

■ **Instructions for use**

- Please use with the tightening torque of 3kgf-cm (29.4 N-cm) or less when fitting.



Combination of PN-5-1 and OP-6-1
Combination of PN-5-1 and HJ-31