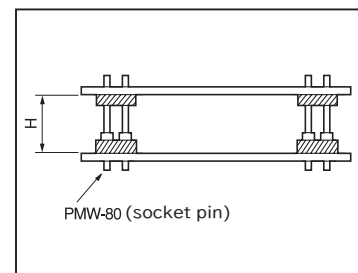
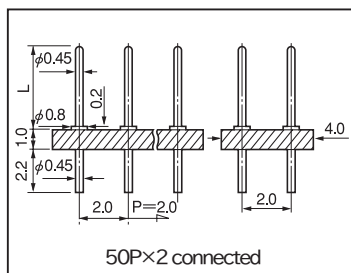


Super-small terminal for two-tiered installation (two-row type)(Pitch: 2.0mm)

MXW-20 series (10pcs/pack)

- This is used for mounting PC boards by two-tiered installation.
- This terminal is of two-row type with a pitch of 2.0mm.
- Material
 Resin part: PPS resin black (UL94V-0),
 Pin: Phosphor bronze, Finish: Gold plating over nickel base
- Rated current: 2A
- Insulation resistance: 500M Ω or over
- Withstand voltage: 1000V AC, DC per minute
- Operating temperature range: - 40 to + 125°C
- Printed board fitting hole diameter: φ 0.6
- Adaptive socket: PMW-80

Part No.	L	Number of pins connected	H	Adaptive socket pin
MXW-20-0	3.0	50 × 2	—	—
MXW-20-1	3.7	50 × 2	5.4	PMW-80
MXW-20-2	4.4	50 × 2	6.1	
MXW-20-3	4.9	50 × 2	6.6	
MXW-20-4	5.4	50 × 2	7.1	



* The dimension H indicates the distance between the boards when combining MXW-20 series with PMW-80

How to order:

MXW-20-1-10PW

↑ Please fill in the number of poles on one side.
 (Maximum number: 50PW)
 (If the number is not specified, we will deliver the part of the maximum number of connection.)

Example of usage



Combination of MXW-20 series with the PMW-80

Socket pin (Pitch: 2.0mm)

Part No.: PMW-80 (10pcs/pack)

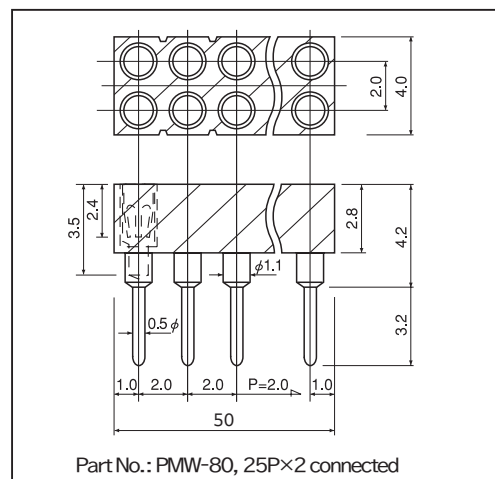
- By combining with MXW-20 series, PC boards can be mounted by two-tiered installation.
- This terminal is of two-row type with a pitch of 2.0mm.
- Material
 Resin part: PPS resin black (UL94V-0),
 Pin part Body: Brass: Gold plating over nickel base
 Contact part Beryllium copper: Gold plating over nickel base
- Operating temperature range: - 40 to + 125°C
- Rated current: 1A
- Insulation resistance: 500M Ω or over
- Withstand voltage: 1000V AC, DC per minute
- Insertion / removal durability : 100 cycles
- Contact resistance: 10m Ω or less
- Insertion / removal forces: 30g or over (per pin)
- Adaptive male pin diameter: φ 0.40 to φ 0.54
- Printed board fitting hole diameter: φ 0.7 to φ 0.8

Part No.: PMW-80

How to order:

PMW-80-10PW

↑ Please fill in the number of poles on one side.
 (Maximum number: 25PW)
 (If the number is not specified, we will deliver the part of the maximum number of connection.)



Part No.: PMW-80, 25P×2 connected