

For insertion / removal of two-tiered type

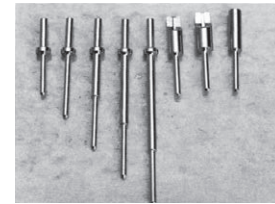
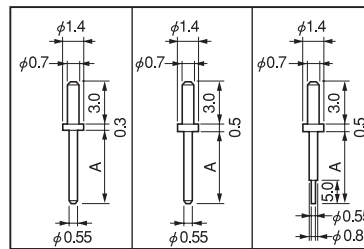
**OX series (1000pcs/pack)**

- This is used for mounting PC boards by two-tiered installation.
- By fitting OX series on the slave board side and PD and PM series socket pins on the master board side, the slave board can be removal / insertion.
- The type with OX series molded with a pitch of 2.54mm is the OY series.
- Material: Brass
- Finish: Gold plating over nickel base
- Rated current : 3A
- Printed board fitting hole diameter:  $\phi$  0.8

■ OX series (slave board side)

Part No.	A	H
OX-000	3.6	4.5
OX-001	4.1	5
OX-002	6.1	7
OX-003	9.1	10
OX-004	11.6	12.5
OX-005	14.1	15

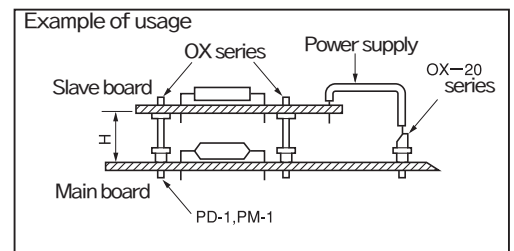
■ Dimension



OX-000 OX-001 OX-002 OX-003 OX-004 OX-005

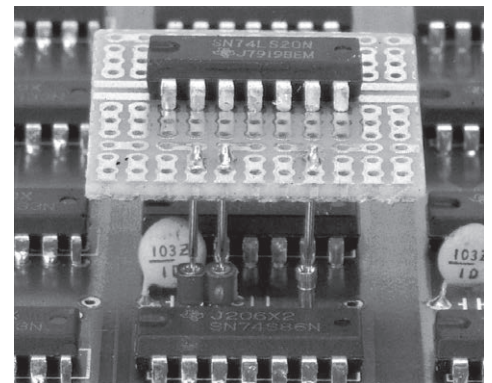
\* The dimension H indicates the distance between the main board and the slave board when PD-1 or PM-1 is used.

- Adaptive socket pin: PD-1, PM-1, PD-4, PD-10, PM-10, PD-40



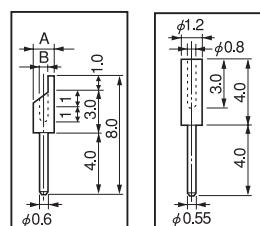
■ OX-20 series (for electric wire)

- This product allows insertion / removal via the electric wire.
- When using the terminal pitch of 2.54, a terminal may contact with the next one. Please cover it with an insulation tube.
- This can be also used as the jumper wire.
- Adaptive socket pin: PD-1, PM-1, PD-4, PD-10, PM-10, PD-40



Part No.	A	B	Electric wire fitting method
OX-201	1.4	0.6	Soldering
OX-202	1.6	0.9	Soldering
OX-301	-	-	Crimping (Tool: OMXT-1)

■ Dimension



OX-201 OX-202 OX-301