

Adjustment part terminal for surface mounting

HM series (1000pcs/pack)

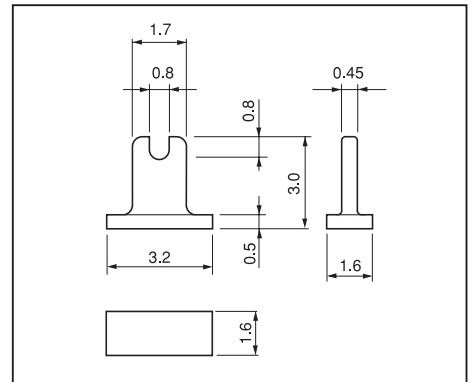
- This is used for fitting a lead type adjustment resistor on a surface mounting board.

- Material: Brass
- Finish: Gold plating over nickel base, Tin plating over nickel base

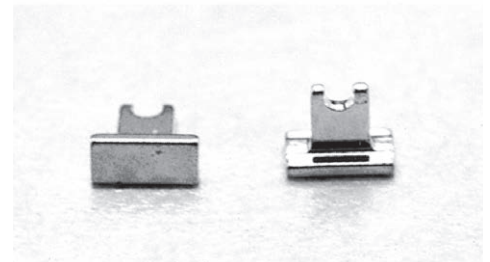
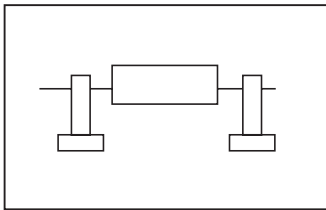
■ Part No.:

HM-1-G)	Gold plating
HM-10-G		
HM-1-S)	Tin plating
HM-10-S		

■ Dimension

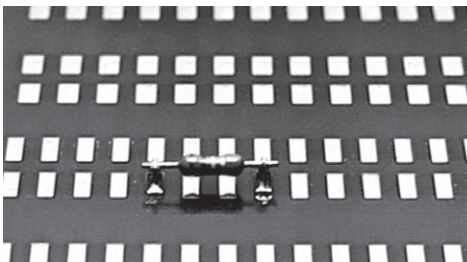
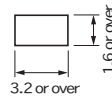


HM-1-G, HM-1-S

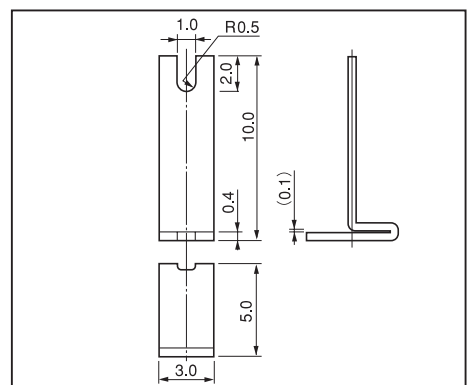


HM-1-G, HM-1-S

■ Recommended land information (HM-1-G, HM-1-S)

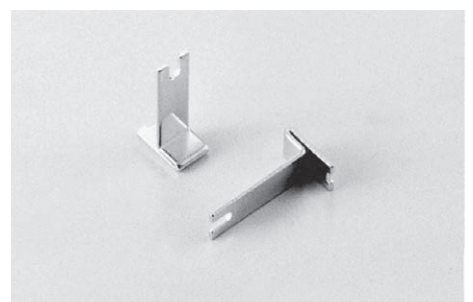
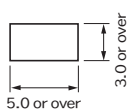


■ Dimension



HM-10-G, HM-10-S

■ Recommended land information (HM-10-G, HM-10-S)



HM-10-G, HM-10-S

