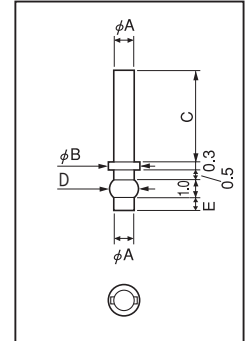
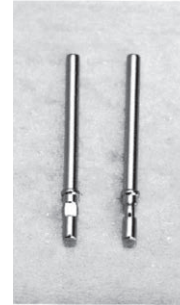


Terminal for hybrid IC

CA series (1000pcs/pack)

- Please use this for checking, hybrid IC, etc.
- A recessed portion (dimensions D part), temporary holding can be securely done to the through hole.
- Material: Brass
- Finish: Gold plating over nickel base
- Rated current
 - CA-1 series: 4A
 - CA-2 series: 5A
 - CA-3 series: 6A
 - CA-4 series: 7A
 - CA-5 series: 2A
 - CA-6 series: 3A
 - CA-7 series: 4A



Part No.	A	B	C	D	E	Printed board fitting hole diameter	Press-fitting tool edge chip
CA-1-1	0.7	1.0	5.0	0.85	1.5	$\phi 0.8^{-0}$	P-2
CA-1-2	0.7	1.0	10.0	0.85	1.5	$\phi 0.8^{-0}$	
CA-1-3	0.7	1.0	15.0	0.85	1.5	$\phi 0.8^{-0}$	
CA-1-4	0.7	1.0	20.0	0.85	1.5	$\phi 0.8^{-0}$	
CA-1-8	0.7	1.0	8.0	0.85	1.5	$\phi 0.8^{-0}$	P-2
CA-2-1	0.8	1.1	5.0	0.95	1.5	$\phi 0.9^{-0}$	
CA-2-2	0.8	1.1	10.0	0.95	1.5	$\phi 0.9^{-0}$	
CA-2-3	0.8	1.1	15.0	0.95	1.5	$\phi 0.9^{-0}$	
CA-2-4	0.8	1.1	20.0	0.95	1.5	$\phi 0.9^{-0}$	P-22
CA-2-8	0.8	1.1	8.0	0.95	1.5	$\phi 0.9^{-0}$	P-2
CA-3-1	0.9	1.2	5.0	1.05	1.5	$\phi 1.0^{-0}$	P-3
CA-3-2	0.9	1.2	10.0	1.05	1.5	$\phi 1.0^{-0}$	
CA-3-3	0.9	1.2	15.0	1.05	1.5	$\phi 1.0^{-0}$	
CA-3-4	0.9	1.2	20.0	1.05	1.5	$\phi 1.0^{-0}$	
CA-3-8	0.9	1.2	8.0	1.05	1.5	$\phi 1.0^{-0}$	P-23
CA-4-1	1.0	1.3	5.0	1.15	1.5	$\phi 1.1^{-0}$	
CA-4-2	1.0	1.3	10.0	1.15	1.5	$\phi 1.1^{-0}$	
CA-4-3	1.0	1.3	15.0	1.15	1.5	$\phi 1.1^{-0}$	
CA-4-4	1.0	1.3	20.0	1.15	1.5	$\phi 1.1^{-0}$	P-23
CA-4-8	1.0	1.3	8.0	1.15	1.5	$\phi 1.1^{-0}$	P-3
CA-5-1	0.45	0.8	3.2	0.54	0.6	$\phi 0.5^{-0}$	P-1
CA-5-2	0.45	0.8	4.0	0.54	0.6	$\phi 0.5^{-0}$	
CA-5-3	0.45	0.8	5.0	0.54	0.6	$\phi 0.5^{-0}$	
CA-5-4	0.45	0.8	6.0	0.54	0.6	$\phi 0.5^{-0}$	
CA-6-1	0.5	0.8	5.0	0.65	1.0	$\phi 0.6^{-0}$	P-21, P-24
CA-6-2	0.5	0.8	10.0	0.65	1.0	$\phi 0.6^{-0}$	
CA-6-8	0.5	0.8	8.0	0.65	1.0	$\phi 0.6^{-0}$	
CA-7-1	0.6	0.9	5.0	0.75	1.5	$\phi 0.7^{-0}$	
CA-7-2	0.6	0.9	10.0	0.75	1.5	$\phi 0.7^{-0}$	P-16
CA-7-3	0.6	0.9	15.0	0.75	1.5	$\phi 0.7^{-0}$	
CA-7-8	0.6	0.9	8.0	0.75	1.5	$\phi 0.7^{-0}$	

- * The press-fitting tool edge chip, P series, is not operable without the main unit, PCX-1
- In the case that it is impossible to insert the product into the TH by hand, please use a tool.
- * The recessed portion (dimensions D part) is only for temporary holding for soldering. Please be sure to carry out soldering.