

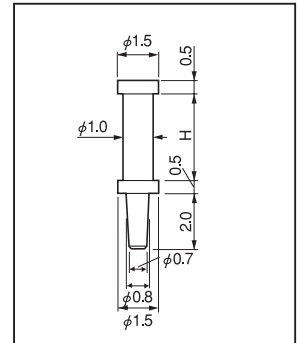
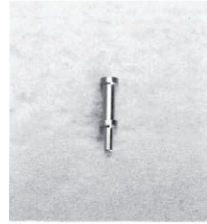
**Test point for logic For printed board with a thickness of t1.0, t0.8**

**SA series (1000pcs/pack)**

- This is a check terminal to be used for a PC board with a thickness of t1.0, t0.8
- Material: Brass
- Finish: Gold plating over nickel base

**Table of dimensions**

Part No.	H	Printed board fitting hole diameter [ $\phi$ ]
SA-1-1	3.0	0.8
SA-1-2	5.0	0.8



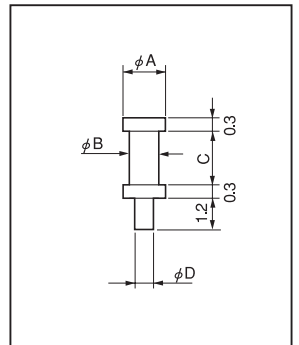
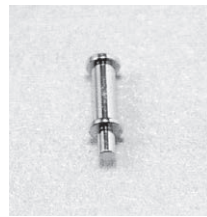
**Test point for logic For printed board with a thickness of t0.6 or less**

**SE series (1000pcs/pack)**

- This is a check terminal to be used for a PC board with a thickness of t0.6 or less.
- Please use this terminal for a ceramic board, flexible board, etc.
- Material: Brass
- Finish: Gold plating over nickel base

**Table of dimensions**

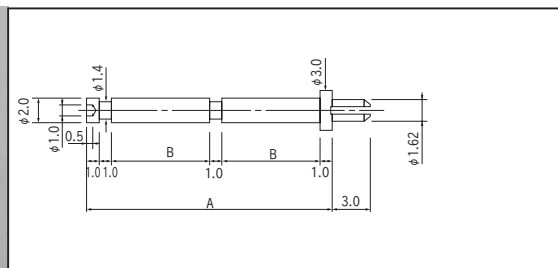
Part No.	A	B	C	D	Printed board fitting hole diameter
SE-1-1	1.0	0.7	1.0	0.48	$\phi$ 0.5
SE-1-2	1.0	0.7	1.5	0.48	$\phi$ 0.5
SE-1-3	1.0	0.7	2.0	0.48	$\phi$ 0.5
SE-2-1	1.5	1.0	1.0	0.78	$\phi$ 0.8
SE-2-2	1.5	1.0	1.5	0.78	$\phi$ 0.8
SE-2-3	1.5	1.0	2.0	0.78	$\phi$ 0.8
SE-2-4	1.5	1.0	3.0	0.78	$\phi$ 0.8



**Long test point**

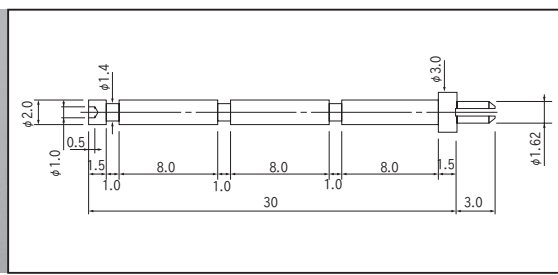
**CT-8 series (100pcs/pack)**

- Please use this terminal when a tall part is installed nearby.
- In addition to using it for check, you can fit a part on the terminal.
- Material: Brass
- Finish: Gold plating over nickel base
- Recommended fitting hole:  
TH:  $\phi$  1.6 Land:  $\phi$  4



■ Part No. A B

CT-8-20	20	8
CT-8-25	25	10.5



■ Part No. CT-8-30