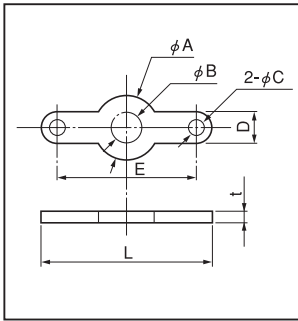


Lug terminal

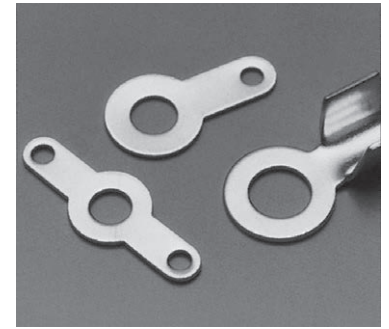
RG series (100pcs/pack)

- This is used for installing electric wire such as GND line and signal line.
- Material: Brass
- Finish: Tin plating over nickel base

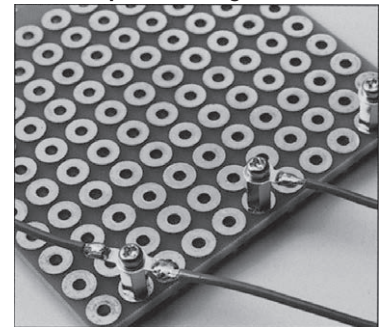
■ **RG-1 series**



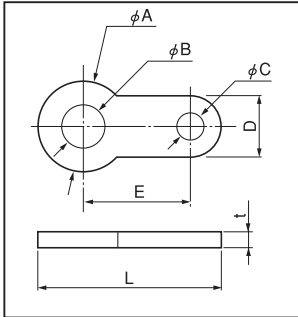
Part No.	A	B	C	D	E	L	t	M
RG-1-2	5.0	2.2	1.5	3.0	9.0	12	0.3	For M2
RG-1-2.6	6.0	2.8	1.5	3.0	13	16	0.5	For M2.6
RG-1-3	7.0	3.2	1.5	3.5	18	21.5	0.5	For M3
RG-1-4	8.0	4.2	1.5	3.5	18.5	22	0.5	For M4



■ **Example of usage**

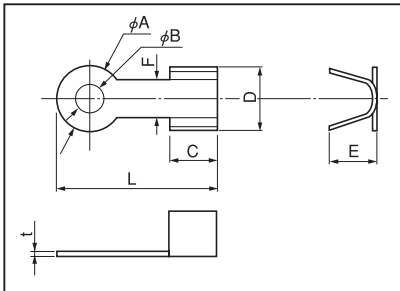


■ **RG-2 series**

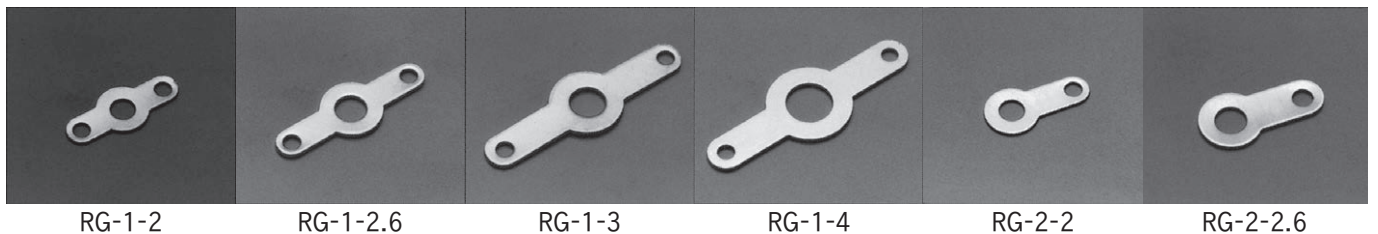


Part No.	A	B	C	D	E	L	t	M
RG-2-2	5.0	2.2	1.5	3.0	6.0	10	0.3	For M2
RG-2-2.6	6.0	2.8	1.8	4.0	7.0	12	0.4	For M2.6
RG-2-3	7.0	3.2	1.5	3.5	7.75	13	0.4	For M3
RG-2-4	8.5	4.2	1.5	4.0	10.75	17	0.6	For M4

■ **RG-3 series**



Part No.	A	B	C	D	E	F	L	t	M
RG-3-2	5.0	2.2	4.0	5.0	3.5	2.7	12	0.3	For M2
RG-3-2.6	6.0	2.8	4.0	5.0	3.5	2.7	12	0.3	For M2.6
RG-3-3	7.0	3.3	3.0	4.1	2.8	3.0	12	0.4	For M3
RG-3-4	8.0	4.3	5.0	5.6	4.5	3.5	14	0.5	For M4



RG-1-2

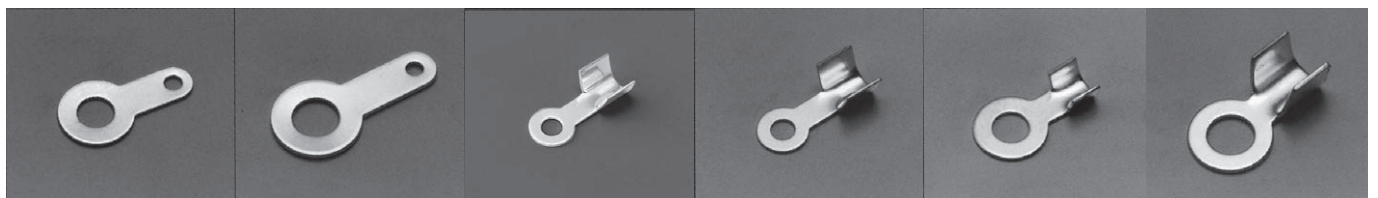
RG-1-2.6

RG-1-3

RG-1-4

RG-2-2

RG-2-2.6



RG-2-3

RG-2-4

RG-3-2

RG-3-2.6

RG-3-3

RG-3-4