

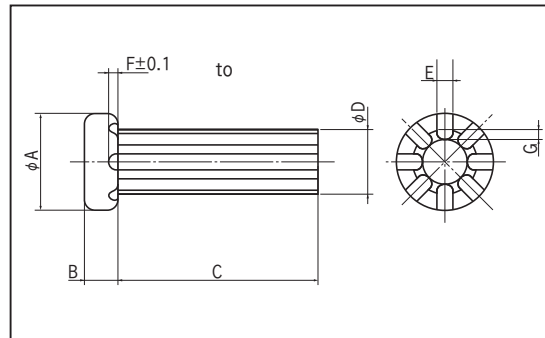
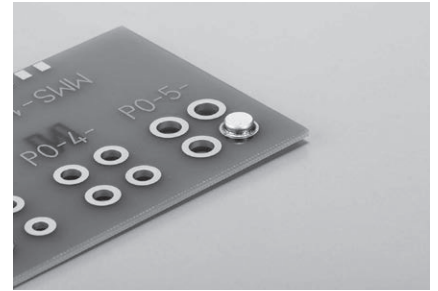
Up-and down conduction pin for high current

PO series (100pcs/pack)

- To flow high current to the PCB such as thick-copper PCB, from component side to soldering side.
- Stable for flowing high current to the through-hole.
- Useful structure to flow solder from component side, soldering side.
- Material: Copper
- Finish: Tin plating over Ni base



■ Example of usage



■ Part No.

Part No.	A	B	C	D	E	F	G	Adaptive PCB thickness	Through hole diameter	Rated current
PO-2-3	3.0	1.0	3.0	2.0	0.5	0.3	0.3	1.6	$\phi 2.1^{-0}$	20A
PO-2-4	3.0	1.0	4.0	2.0	0.5	0.3	0.3	2.0	$\phi 2.1^{-0}$	20A
PO-2-5	3.0	1.0	5.0	2.0	0.5	0.3	0.3	3.0 to 3.5	$\phi 2.1^{-0}$	20A
PO-2-6	3.0	1.0	6.0	2.0	0.5	0.3	0.3	3.6 to 5.0	$\phi 2.1^{-0}$	20A
PO-3-3	4.0	1.5	3.0	3.0	0.5	0.3	0.3	1.6	$\phi 3.1^{-0}$	30A
PO-3-4	4.0	1.5	4.0	3.0	0.5	0.3	0.3	2.0	$\phi 3.1^{-0}$	30A
PO-3-5	4.0	1.5	5.0	3.0	0.5	0.3	0.3	3.0 to 3.5	$\phi 3.1^{-0}$	30A
PO-3-6	4.0	1.5	6.0	3.0	0.5	0.3	0.3	3.6 to 5.0	$\phi 3.1^{-0}$	30A
PO-4-3	5.0	2.0	3.0	4.0	0.8	0.4	0.4	1.6	$\phi 4.1^{-0}$	45A
PO-4-4	5.0	2.0	4.0	4.0	0.8	0.4	0.4	2.0	$\phi 4.1^{-0}$	45A
PO-4-5	5.0	2.0	5.0	4.0	0.8	0.4	0.4	3.0 to 3.5	$\phi 4.1^{-0}$	45A
PO-4-6	5.0	2.0	6.0	4.0	0.8	0.4	0.4	3.6 to 5.0	$\phi 4.1^{-0}$	45A
PO-5-3	6.0	2.0	3.0	5.0	1.0	0.5	0.5	1.6	$\phi 5.1^{-0}$	60A
PO-5-4	6.0	2.0	4.0	5.0	1.0	0.5	0.5	2.0	$\phi 5.1^{-0}$	60A
PO-5-5	6.0	2.0	5.0	5.0	1.0	0.5	0.5	3.0 to 3.5	$\phi 5.1^{-0}$	60A
PO-5-6	6.0	2.0	6.0	5.0	1.0	0.5	0.5	3.6 to 5.0	$\phi 5.1^{-0}$	60A