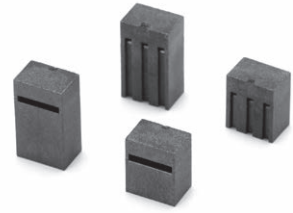


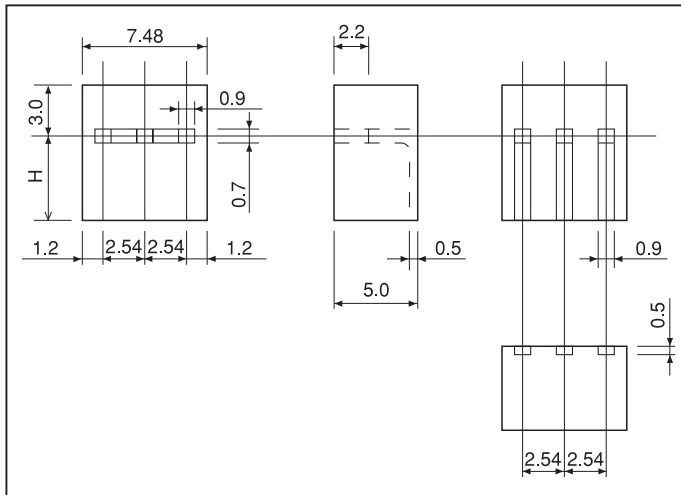
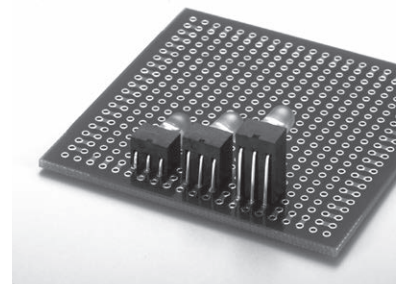
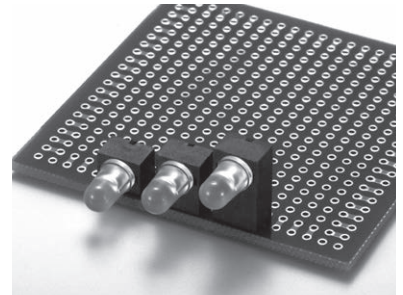
90-degree LED spacer (three-legged type)

3LZ series (100pcs/pack)

- This is used for fitting an LED of dual-color emission type (three-legged type) at right angle.
- This is used for an LED with the head diameter of $\phi 3$ or $\phi 5$.
- The height ranges from 2 mm to 10 mm.
- Please insert an LED to this product and set at right angle.
- Material: PPS resin black (UL94V-0)
- Reflow: Can be used.
- Operating temperature range: $- 40$ to $+ 125^{\circ}\text{C}$
- Adaptive LED: LED lens size $\phi 3$, $\phi 5$
 Leg pitch: 2.54 mm, 2.5 mm
 Leg diameter: $\square 0.5$, $\phi 0.5$, $\phi 0.6$ or less, $\square 0.6$ or less



■ Example of usage



■ Part No.

Part No.	H
3LZ-2	2
3LZ-2.5	2.5
3LZ-3	3
3LZ-3.5	3.5
3LZ-4	4
3LZ-4.5	4.5
3LZ-5	5
3LZ-5.5	5.5
3LZ-6	6
3LZ-6.5	6.5
3LZ-7	7
3LZ-7.5	7.5
3LZ-8	8
3LZ-8.5	8.5
3LZ-9	9
3LZ-9.5	9.5
3LZ-10	10