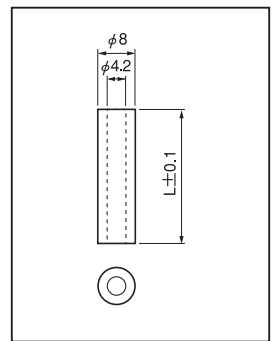
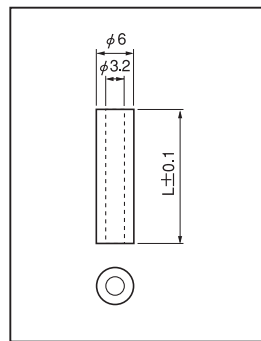
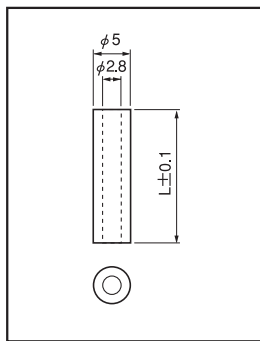
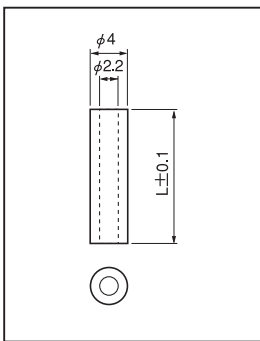
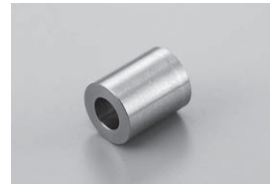


# ■ Metal type (stainless steel)

Spacer of hollow shape for printed board

**ERS series** (100pcs/pack)

- This is used for fitting a printed board to a chassis and other adaptive cases.
- The inside is hollow.
- This is used under poor environment conditions.
- Material: SUS-303
- Finish: Degreasing



## ■ For M2 screw

Part No.	L
2ERS-1	1
2ERS-1.5	1.5
2ERS-2	2
2ERS-2.5	2.5
2ERS-3	3
2ERS-3.5	3.5
2ERS-4	4
2ERS-4.5	4.5
2ERS-5	5
2ERS-5.5	5.5
2ERS-6	6
2ERS-6.5	6.5
2ERS-7	7
2ERS-7.5	7.5
2ERS-8	8
2ERS-8.5	8.5
2ERS-9	9
2ERS-9.5	9.5
2ERS-10	10
2ERS-11	11
2ERS-12	12
2ERS-13	13
2ERS-14	14
2ERS-15	15
2ERS-16	16
2ERS-17	17
2ERS-18	18
2ERS-19	19
2ERS-20	20
2ERS-25	25
2ERS-30	30

## ■ For M2.6 screw

Part No.	L
2.6ERS-1	1
2.6ERS-1.5	1.5
2.6ERS-2	2
2.6ERS-2.5	2.5
2.6ERS-3	3
2.6ERS-3.5	3.5
2.6ERS-4	4
2.6ERS-4.5	4.5
2.6ERS-5	5
2.6ERS-5.5	5.5
2.6ERS-6	6
2.6ERS-6.5	6.5
2.6ERS-7	7
2.6ERS-7.5	7.5
2.6ERS-8	8
2.6ERS-8.5	8.5
2.6ERS-9	9
2.6ERS-9.5	9.5
2.6ERS-10	10
2.6ERS-11	11
2.6ERS-12	12
2.6ERS-13	13
2.6ERS-14	14
2.6ERS-15	15
2.6ERS-16	16
2.6ERS-17	17
2.6ERS-18	18
2.6ERS-19	19
2.6ERS-20	20
2.6ERS-25	25
2.6ERS-30	30

## ■ For M3 screw

Part No.	L
3ERS-1	1
3ERS-1.5	1.5
3ERS-2	2
3ERS-2.5	2.5
3ERS-3	3
3ERS-3.5	3.5
3ERS-4	4
3ERS-4.5	4.5
3ERS-5	5
3ERS-5.5	5.5
3ERS-6	6
3ERS-6.5	6.5
3ERS-7	7
3ERS-7.5	7.5
3ERS-8	8
3ERS-8.5	8.5
3ERS-9	9
3ERS-9.5	9.5
3ERS-10	10
3ERS-11	11
3ERS-12	12
3ERS-13	13
3ERS-14	14
3ERS-15	15
3ERS-16	16
3ERS-17	17
3ERS-18	18
3ERS-19	19
3ERS-20	20
3ERS-25	25
3ERS-30	30

## ■ For M4 screw

Part No.	L
4ERS-1	1
4ERS-1.5	1.5
4ERS-2	2
4ERS-2.5	2.5
4ERS-3	3
4ERS-3.5	3.5
4ERS-4	4
4ERS-4.5	4.5
4ERS-5	5
4ERS-5.5	5.5
4ERS-6	6
4ERS-6.5	6.5
4ERS-7	7
4ERS-7.5	7.5
4ERS-8	8
4ERS-8.5	8.5
4ERS-9	9
4ERS-9.5	9.5
4ERS-10	10
4ERS-11	11
4ERS-12	12
4ERS-13	13
4ERS-14	14
4ERS-15	15
4ERS-16	16
4ERS-17	17
4ERS-18	18
4ERS-19	19
4ERS-20	20
4ERS-25	25
4ERS-30	30