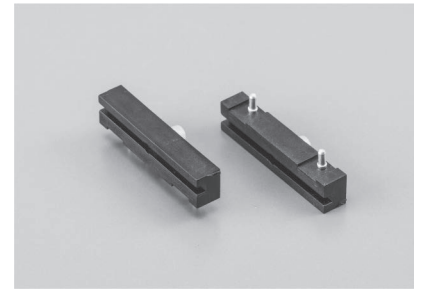


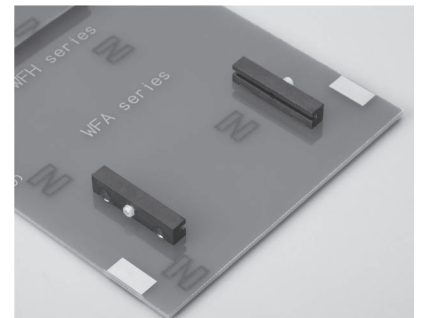
Fitting mount for two-tiered installation of PC board (TH type)

WFA series (10pcs/pack)

- When placing an additional board on a PC board, this product can be fixed the additional board in parallel once soldering and fixing.
- Three types with the adaptive PC board thickness of t1.6, t1.0 and t0.6 are available.
- This is used for fitting by raising 3 mm above the PC board.
- Two types (with screw and without screw) are available.
- The type with screw can fix the additional board to prevent the board from moving.
- Surface mounting type (WFH series) is also available.
- Material Resin part: PPS black (UL94V-0)
Metal part: Brass
Screw part: Special polyamide resin ivory color (UL94HB)
- Finish: Tin plating over nickel base



■ Example of usage

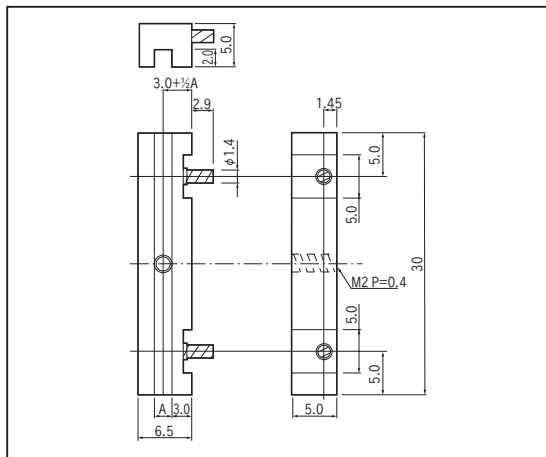


■ Part No.

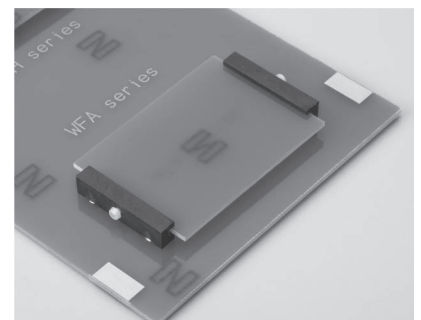
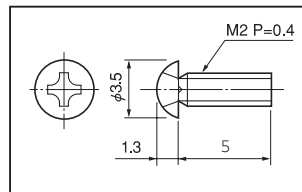
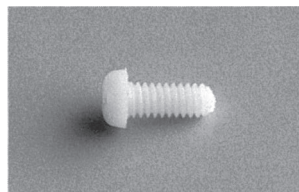
Part No.	A	Screw	Adaptive PC board thickness
WFA-1-1.6	1.7	Without	1.6
WFA-1-1.6-S	1.7	With M2 × 5 screw	1.6
WFA-1-1.0	1.1	Without	1.0
WFA-1-1.0-S	1.1	With M2 × 5 screw	1.0
WFA-1-0.6	0.7	Without	0.6
WFA-1-0.6-S	0.7	With M2 × 5 screw	0.6

■ Dimension

Main body

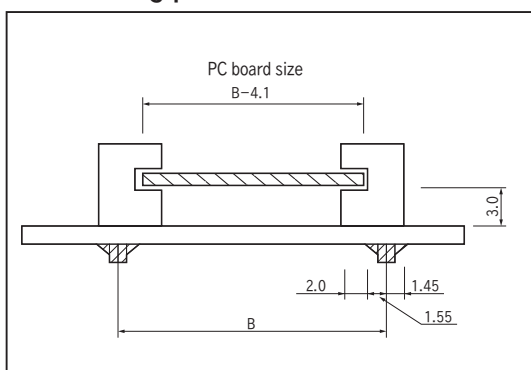


Screw part



The PC board can be fixed by tightening the screw. (-S type)

■ Reference drawing of the fitting position



■ Instructions for use

Do not attach copper foil to the both sides (2.5 mm from the edge face) of the PC board (the side to fit in the groove of this product).

■ Recommended land information

