

Through hole tap

TH series

- A through hole changes to a threaded hole (M1.0, M1.2, M1.4, M1.6, M1.7, M2, M2.5, M2.6, or M3).
- Taping type has an adsorption film. Please remove by pushing it from the opposite side after reflow.
- The jig for removing adsorption films (Part No.: TH-JIG) is available.
- Material: Brass
- Finish: Tin plating over nickel base

Rated current:

TH-0.8-M1.0.....10A	TH-1.6-M1.7.....15A
TH-0.8-M1.2.....12A	TH-1.6-M2.....20A
TH-0.8-M1.4.....12A	TH-1.6-M2.5, M2.6...20A
TH-1.6-M1.6.....15A	TH-1.6-M3.....30A

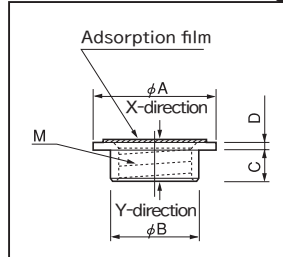
Tightening torque

TH-0.8-M1.0.....0.3kgf-cm (2.94N-cm) or less
TH-0.8-M1.2.....0.6kgf-cm (5.88N-cm) or less
TH-0.8-M1.4.....1.0kgf-cm (9.8N-cm) or less
TH-1.6-M1.6.....1.5kgf-cm (14.7N-cm) or less
TH-1.6-M1.7.....1.5kgf-cm (14.7N-cm) or less
TH-1.6-M2.....1.5kgf-cm (14.7N-cm) or less
TH-1.6-M2.5, M2.6.....3kgf-cm (29.4N-cm) or less
TH-1.6-M3.....5kgf-cm (49N-cm) or less(X-direction) 3kgf-cm (29.4N-cm) or less(Y-direction)

- Adaptive printed board thickness: t1.6 or over (TH-1.6 series), t0.8 or over (TH-0.8 series) (There is no problem if it is used for other board thickness.)

- Recommended metal mask thickness:150 μm to 200 μm

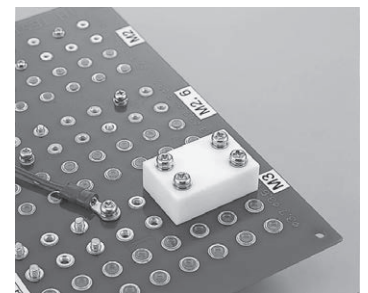
Dimensional drawing



With the parts attached

Part No.

Part No.	A	B	C	D	M	Package
TH-0.8-M1.0	2.5	1.6	0.7	0.5	M1.0 P = 0.25	Reel (1000pcs/reel)
TH-0.8-M1.2	2.5	1.8	0.7	0.5	M1.2 P = 0.25	Reel (1000pcs/reel)
TH-0.8-M1.4	2.7	2.0	0.7	0.7	M1.4 P = 0.3	Reel (1000pcs/reel)
TH-1.6-M1.6	3.0	2.2	1.5	0.3	M1.6 P = 0.35	Reel (900pcs/reel)
TH-1.6-M1.7	3.0	2.3	1.5	0.3	M1.7 P = 0.35	Reel (900pcs/reel)
TH-1.6-M2	4.0	2.5	1.5	0.3	M2 P = 0.4	Reel (900pcs/reel)
TH-1.6-M2.5	4.5	3.1	1.5	0.3	M2.5 P = 0.45	Reel (900pcs/reel)
TH-1.6-M2.6	4.5	3.1	1.5	0.3	M2.6 P = 0.45	Reel (900pcs/reel)
TH-1.6-M3	5.0	3.5	1.5	0.3	M3 P = 0.5	Reel (900pcs/reel)



With the parts attached

To order bulk product

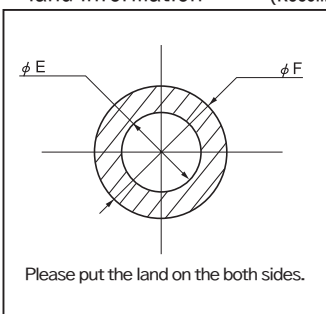
TH-1.6-M3-B

↑ Please specify -B. (100pcs/pack)

Adsorption films are not put on the bulk products.

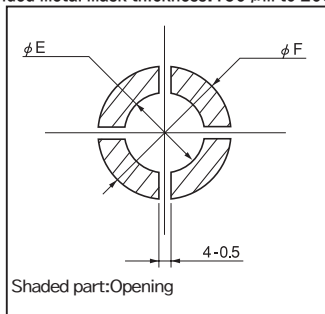
* Please use the automatic moulder of automatic recognition type.

Recommended land information



Recommended metal mask

(Recommended metal mask thickness:150 μm to 200 μm)



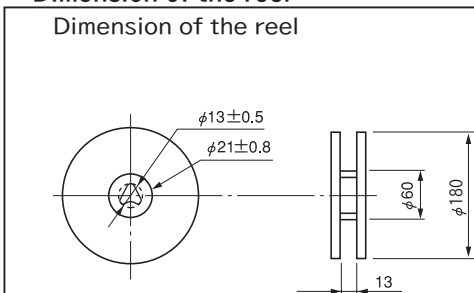
Part No.	φ E	φ F
TH-0.8-M1.0	1.8	3.5
TH-0.8-M1.2	2.0	3.5
TH-0.8-M1.4	2.2	4.0
TH-1.6-M1.6	2.4	4.0
TH-1.6-M1.7	2.5	4.0
TH-1.6-M2	2.7	5.0
TH-1.6-M2.5	3.3	5.5
TH-1.6-M2.6	3.3	5.5
TH-1.6-M3	3.7	6.0



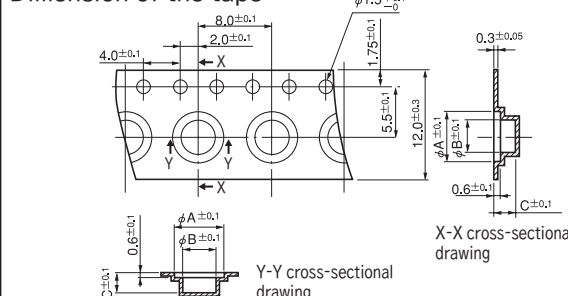
Screw can be inserted both from the part face side and the soldering face side.

• If it is bigger than the recommended fitting through hole (φ E), the torque to the Y-direction (soldering face side) will be decreased. (As the flow of soldering to the through hole is reduced)

Dimension of the reel



Dimension of the tape



	A	B	C
TH-0.8-M1.0	2.7	2.7	1.6
TH-0.8-M1.2	2.7	2.7	1.6
TH-0.8-M1.4	2.9	2.9	1.8
TH-1.6-M1.6	3.2	3.2	2.2
TH-1.6-M1.7	3.2	3.2	2.2
TH-1.6-M2	4.5	2.8	2.3
TH-1.6-M2.5	5.0	3.4	2.3
TH-1.6-M2.6	5.0	3.4	2.3
TH-1.6-M3	5.5	3.8	2.3

▲ Use of a through hole tap is limited to a through hole board. (It is impossible to use it for a one-sided board and non through hole board.)