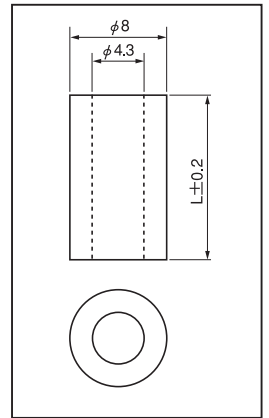
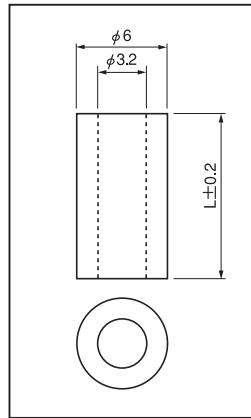
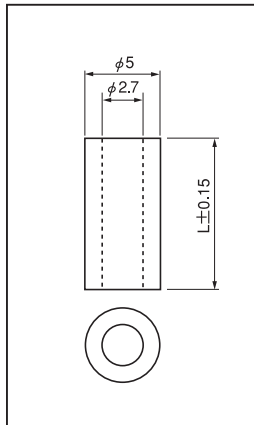
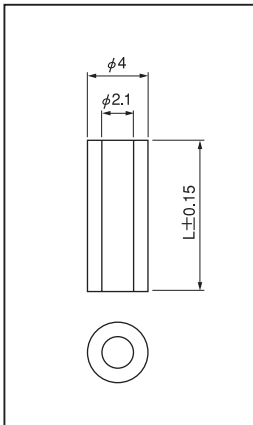


Resin type

Spacer of hollow shape for printed board

EP, 4EP, 2.6EP, 2EP series (100pcs/pack)

- This is used for fitting a printed board to a chassis, and other adaptive cases.
- Material: Acetal copolymer (UL94HB)
- Color: MILKY WHITE
- Operating temperature range: - 40 to + 85 °C



■ For M2 screw

Part No.	L
2EP-1	1
2EP-2	2
2EP-3	3
2EP-4	4
2EP-5	5
2EP-6	6
2EP-7	7
2EP-8	8
2EP-9	9
2EP-10	10
2EP-11	11
2EP-12	12
2EP-13	13
2EP-14	14
2EP-15	15
2EP-16	16
2EP-17	17
2EP-18	18
2EP-19	19
2EP-20	20
2EP-25	25
2EP-30	30

■ For M2.6 screw

Part No.	L
2.6EP-1	1
2.6EP-2	2
2.6EP-3	3
2.6EP-4	4
2.6EP-5	5
2.6EP-6	6
2.6EP-7	7
2.6EP-8	8
2.6EP-9	9
2.6EP-10	10
2.6EP-11	11
2.6EP-12	12
2.6EP-13	13
2.6EP-14	14
2.6EP-15	15
2.6EP-16	16
2.6EP-17	17
2.6EP-18	18
2.6EP-19	19
2.6EP-20	20
2.6EP-25	25
2.6EP-30	30
2.6EP-40	40
2.6EP-50	50

■ For M3 screw

Part No.	L
EP-1	1
EP-2	2
EP-3	3
EP-4	4
EP-5	5
EP-6	6
EP-7	7
EP-8	8
EP-9	9
EP-10	10
EP-11	11
EP-12	12
EP-13	13
EP-14	14
EP-15	15
EP-16	16
EP-17	17
EP-18	18
EP-19	19
EP-20	20
EP-25	25
EP-30	30
EP-40	40
EP-50	50

■ For M4 screw

Part No.	L
4EP-3	3
4EP-4	4
4EP-5	5
4EP-6	6
4EP-7	7
4EP-8	8
4EP-9	9
4EP-10	10
4EP-11	11
4EP-12	12
4EP-13	13
4EP-14	14
4EP-15	15
4EP-16	16
4EP-17	17
4EP-18	18
4EP-19	19
4EP-20	20
4EP-25	25
4EP-30	30
4EP-40	40
4EP-50	50