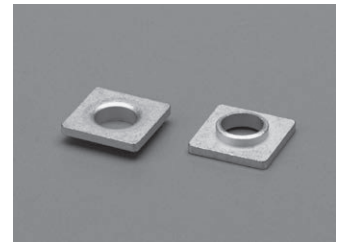


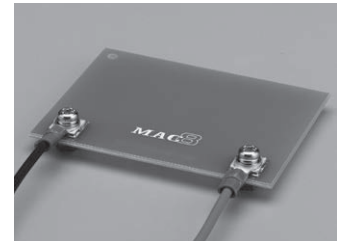
Power supply terminal

**NH series**

- Put it on a through hole of the board and solder it by reflow soldering.
- You can use this item for supplying power to the printed circuit board.
- Attach a crimping terminal to the tip of electric wire and screw it with a nut.
- If BDA-15-M4 and BDB-20-M4 are connected with NH series by a screw, it is possible to carry current between printed circuit boards without electrical wiring.
- Material: Copper
- Finish: Tin plating over nickel base
- Rated current: 40A



■ Example of usage



Power is supplied through the crimping terminal

■ Part No.

Part No.	Adsorption film	Package
NH-4	None	Bulk (100pcs/pack)
NH-4-T	None	Reel (300pcs/reel)
NH-4-T-A	Include	Reel (300pcs/reel)

Please remove the adsorption film after mounting.

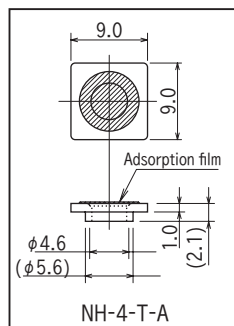
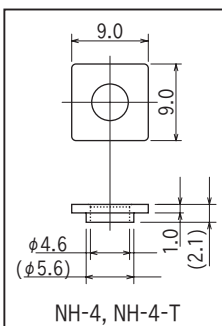


Combination with BDA-15-M4

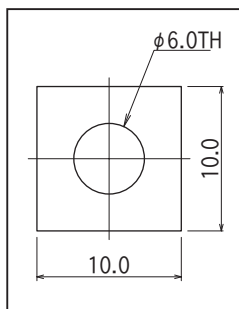


Combination with BDB-20-M4

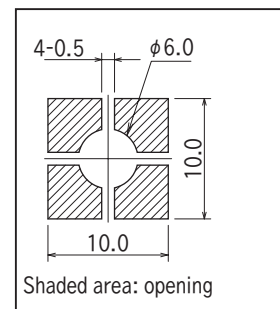
■ Dimension



■ Recommended land information



■ Recommended metal mask



Recommended metal mask thickness  
120 μm to 200 μm

■ Dimension of the reel

